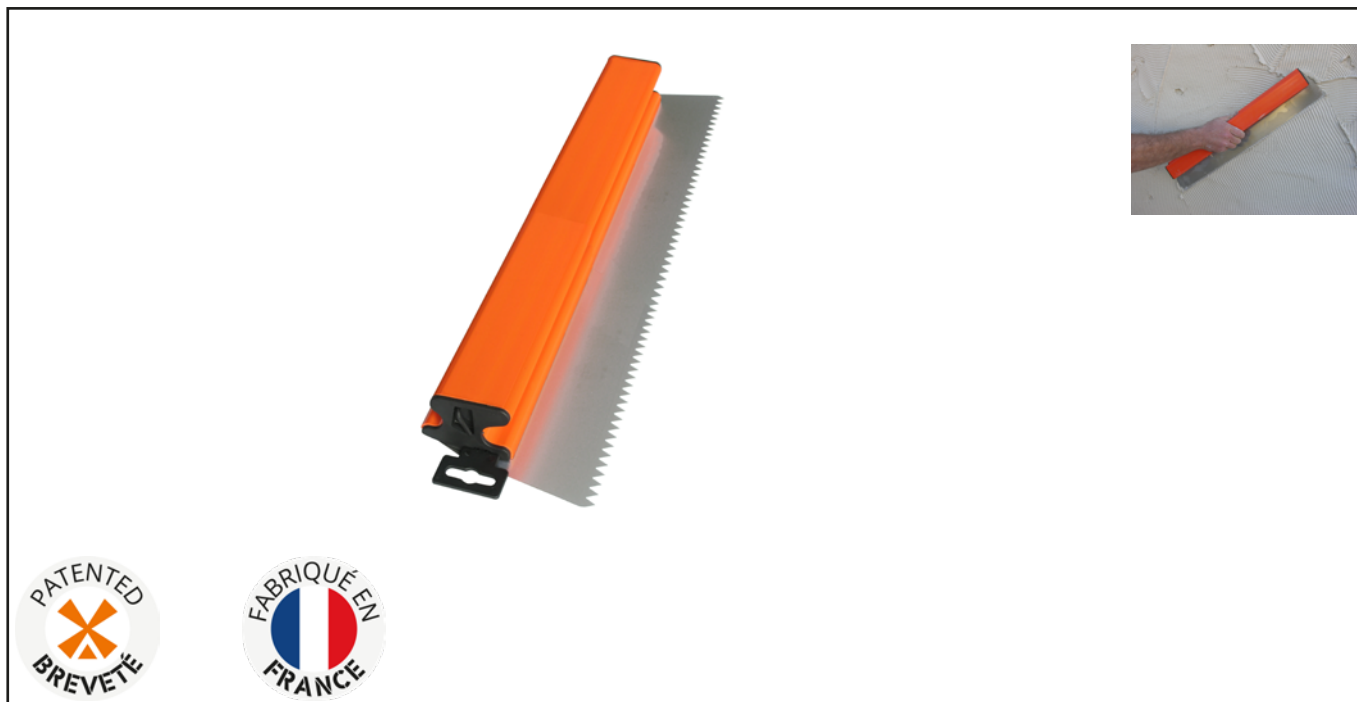




ERGOLAME® BLADE FACADE Réf.: 227920

Characteristics

USE: for the realization of the facades, the bonding of the polystyrenes in external insulation. CHARACTERISTICS: wide pointed teeth 8 x 9 mm. Stainless steel blade 120 mm. Thickness: 0.6 mm.



Product data

Dim. dents mm	L mm	Thickness mm	 g	G	Artikelnr.		EAN Code
8 x 9 - pointue	600	0,6	705		227920	2	3479132279207
8 x 8 x 8 - carrée	600	0,6	705		227930	2	3479132279306



NOVALIA SAS 2 rue de Bergognon 42500 LE CHAMBON F.
FRANCE - www.novalia.pro

PEDDINGHAUS Handwerkzeuge In der Graslake 35
58332 Schwelm DEUTSCHLAND - www.peddinghaus.de

NOVALIA SA Str. Narciselor nr.50 500251 - Braşov ROMÂNIA
www.mob-ius.ro

NOVALIA ESPAÑA Portuetxe 51, of.204 20018 San Sebastián